



CLASSIC BEEF SHOW

Coordinator: Tracy Bjornestad, Flornoy

Judge: Mikayla Duchi, Gazelle

Timeline & Rules

Eligibility → Open to all California Juniors.

Entry Forms Due → On or before
Thursday, May 16, 5 pm, Fair Office

Or: Enter online at marinfair.org through
Monday, June 3.

Please enter early. Space is limited.
When area is full, no more entries
will be accepted.



Entry Fee → \$25 per Head – Steers and Commercial Heifers

→ \$5 per Head – Breeding Classes

No entry fee for Showmanship or Class 4 (County Bred).
Entry Fees must accompany Entry Forms.

A 2019 Registration Fee of \$2 per person will apply; save \$1 by entering online.

Credentials → Each exhibitor will receive two credentials – one fair admission credential and one combined fair admission/parking credential.

Entry Limit → Two (2) Steers – No limit for Breeding Animals and Commercial Heifers.

Arrival Time → Saturday, July 6, 7 am to 9 am

Judging Time → Saturday, July 6, approximately 12 noon

Departure Time → Saturday, July 6, approximately 5 pm

1. Open to junior exhibitors 5 through 19 years of age. Age as of July 6, 2019.
2. Exhibitors must be bonafide owner of entries as of March 15, 2019.
3. No weight limit.
4. All breeds will be shown together. Steer and Commercial Heifer classes will be broken by coordinator after close of entries.
5. First and second place winners in the Steer and Commercial Heifer classes will come back for the Champion and Reserve Champion drive.
6. Champions and Reserve Champions will receive a rosette and cash award.
7. Exhibitors must wear western attire. No tank tops or shorts.
8. Top five steers and top five commercial heifers will earn prize money per the following scale:
 - 1st Place-----30% of entry money
 - 2nd Place ---25% of entry money
 - 3rd Place ----20% of entry money
 - 4th Place ----15% of entry money
 - 5th Place ----10% of entry money
9. Straw bedding will be provided by the Fair.
10. **Exhibitors must clean their stalls before departure.**



Division 940 Open Junior Beef Classic – Steers

Class Ribbons to Ninth Place - Refer to Rule #8 for Cash Awards.
The top five steers (Entry Fee \$25) will receive prize money as listed in Rule #8.

- 1 Junior Open Steers* ----- No Weight Limit
- 2 Champion Steer----- \$20 & Banner
- 3 Reserve Champion Steer----- \$10 & Rosette
- 4 Marin, Sonoma, & Napa County Bred Steers*
(Must also enter Class 1)----- No Weight Limit
- 5 Champion County Bred Steer ----- \$20 & Banner
- 6 Reserve Champion County bred Steer ----- \$10 & Rosette

* CLASSES WILL BE BROKEN AFTER CLOSE OF ENTRIES.

Division 941 Open Junior Breeding Beef Classic

Class Registered Purebred Breeding Animals (Entry Fee \$5 per animal)

American System of Judging

Awards Offered per Class (except where noted)

1st	2nd	3rd	4th	5th	6th through 9th Place
\$30	\$25	\$20	\$15	\$10	Ribbons

- 7 Bull Calves ----- September 2018 through February 2019
- 8 Yearling Bulls ----- March 2017 through August 2018
- 9 Champion Bull ----- \$20 & Banner
- 10 Reserve Champion Bull ----- \$10 & Rosette
- 11 Junior Heifer Calves ----- On or after January 2019
- 12 Senior Heifer Calves ----- September 2018 through December 2018
- 13 Summer Yearling Heifers ----- May 2018 through August 2018
- 14 Junior Yearling Heifers ----- January 2018 through April 2018
- 15 Senior Yearling Heifers ----- March 2017 through December 2017
- 16 Champion Heifer ----- \$20 & Banner
- 17 Reserve Champion Heifer ----- \$10 & Rosette
- 18 Get of Sire ----- Three animals, get of same bull
- 19 Pair of Bulls ----- Two bulls, any age
- 20 Pair of Females ----- Two Females, Any age

Division 942 Open Junior Commercial Heifer Classic

Class Ribbons to Ninth Place - Refer to Rule #8 for Cash Awards.
The top five commercial heifers (Entry Fee \$25) will receive prize money as listed in Rule #8. Unregistered or Grade Animals

- 21 Junior Open Commercial Heifers* ----- not older than March 2017
- 22 Champion Commercial Heifer ----- \$20 & Banner
- 23 Reserve Champion Commercial Heifer ----- \$10 & Rosette

* CLASSES WILL BE BROKEN AFTER CLOSE OF ENTRIES.

Division 943 Classic Beef Showmanship

- No entry fee, but please include showmanship on your entry form.

Rosettes to Ninth Place – Cash Awards for Championship Class

American System of Judging –

Awards Offered for Class 28

<u>1st</u>	<u>2nd</u>	<u>3rd</u>	<u>4th</u>	<u>5th</u>	<u>6th</u>	<u>7th</u>	<u>8th</u>
\$30	\$20	\$15	\$10	\$10	\$8	\$5	\$5

Class

(See Rule #1 for age requirements)

- 24** Pee Wee Showmanship, Exhibitors 5 through 8
- 25** Junior Showmanship, Exhibitors 9 through 11
- 26** Intermediate Showmanship, Exhibitors 12 & 13
- 27** Senior Showmanship, Exhibitors 14 & over
- 28** Overall Showmanship Championship – Open to all ages – First and Second Place winners in each age class will qualify for this class.
- 29** Champion Showman ----- Banner



2018 Showmanship Winners

- **Pee Wee – Aidan Cunningham**
- **Junior – Stran Stevens**
- **Intermediate – Brinlee Stevens**
- **Senior – Emily Maners**
- **Overall Showmanship Champion – Brinlee Stevens**

2018 BEEF CLASSIC WINNERS

Champion Steer

Emily Maners

Reserve Champion Steer

Tucker Pacatte

Champion County Bred Steer

Emily Maners

Champion Bull

Logan Pomi

Reserve Champion Bull

Logan Pomi

Champion Heifer

Derrick Pomi

Reserve Champion Heifer

Tucker Pacatte

Champion Commercial Heifer

Ryan Naugle



A Thank you to Sponsors of the
Marin County Fair Classic Beef Show



Hunt & Behrens, Inc., Petaluma

GBT Nunes & Co.

Mark & Cindy Pomi & Family, Petaluma
Special Awards for Showmanship

Marvin Nunes & Barbara Stevens, Santa Rosa
in memory of George Nunes & John Stevens

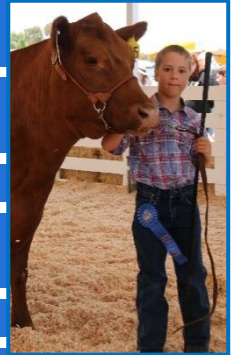
Barboni Ranch, Hicks Valley

S/2 Angus Ranch, Marshall
in memory of Bucky Stevens

Sonoma-Marin Cattlemen's Association

Sonoma Mountain Herefords, Santa Rosa

Stemple Creek Ranch, Tomales



Photos by
Tracy
Bjornestad
Flournoy CA

